

100 PREMIUM Visiting Cards +1 FREE Holder

₹130

Order in minutes! Receive in days!

Order Now

Vistaprint

\*conditions apply

# e-architect

Home News Events Architecture Architects Competitions Tours Products Profiles Photos Jobs Books

Tweet 4

Like 0

Hyatt Regency Pune, India Hotel Architecture, New Indian Building, Accommodation, Picture

## Hyatt Regency, Pune Building

New Indian Hotel, Maharashtra - by Bilkey Linas Design

Search



11 Sep 2013

### Hyatt Regency, Pune

Principal architects: Bilkey Linas Design

Landscape architect: Joel Burega

Hardscape design: Odyssey

Location: Pune, Maharashtra, western India

#### HYATT REGENCY, Pune

Odyssey was awarded the Hardscape contract for The HYATT REGENCY in Pune. The principal architects Bilkey Linas Design and Landscape architect Joel Burega envisioned a tropical feel for the external area of the Hotel. Odyssey was involved in the stonework for various elements of the building including its landscape.



photo : Ruchika Grover

**FAÇADE:** 5000 SQM of Jaisalmer Flower Limestone in an antique finish has been dry clad on the twin towers of the Hyatt Regency; one serving as service apartments and retail, while the second is a five star business hotel.

**HARDSCAPE AND WATER FEATURES:** The entrance driveway is cobbled in Black Granite & Yellow Jaisalmer hand-cut cobbles in 200 x 100 x 100 mm. A raised reflective water body is clad with Tropical Green Granite, which is grooved and chipped to provide a white water effect. Floating Lanterns on the reflective water body have a solid stone spherical base and brass tops. Tropical Green Granite sculptures of 1500 mm height and with a high gloss finish are placed in the alfresco dining area.



photos : Ruchika Grover

**ARTWORK:** Black Granite Arches are carved out of a single block of 300 mm thick stone. These arches are propelled on stainless steel rods and installed on 100 mm thick stone slab. Lotus Pad Cut-Work Lattice is water-jet cut in 50 mm thick Black Granite and is flanked by 216 lotuses carved from spherical stones of 150 mm diameter and installed on brass stems on either side of

Buy **OUTLOOK** Digital Edition

Save over **50%**

[Read Now](#)

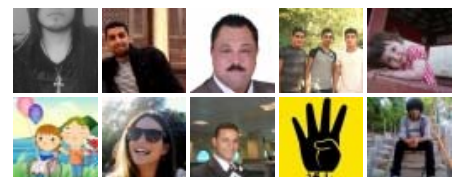
**MAGZTER** AVAILABLE ON



[www.e-architect.co.uk](http://www.e-architect.co.uk)

Like

123,824 people like [www.e-architect.co.uk](http://www.e-architect.co.uk).



Facebook social plugin

carved from spherical stones of 100 mm diameter and installed on brass stems on either side of the lattice. We also did granite arches which were carved out of a single block of 300 mm thick stone and these arched were placed propelled on stainless steel rods and installed on 100 mm thick stone slab. Floating Lanterns on the reflective water body have a solid stone spherical base and brass tops. Tropical Green Granite Sculptures of 1500 mm height and with a high gloss finish are placed in the alfresco dining area.

Odyssey handed over the project within 14 months from the date it was awarded to them. The scope of work included façade, Hardscape, water feature and artwork. No, as such we didn't face any obstacle during the project construction phase.

Maintaining the perfect level, and consistent water flow throughout, on all sides of the reflective water body was a challenge. The intent was to have very little movement of water on the surface of the water-body and have an even cascade on the rippled surface of the edges of the water-body.



photos : Ruchika Grover

## Hyatt Regency in Pune - Building Information

Typology: Hospitality

Name of Project: Hyatt Regency, Pune

Location: Pune, Maharashtra

Name of Client: Mr. R K Jatia

Name of Client's Firm: Ascent Hotels Pvt. Ltd.

Contact Person: Mr. Jitender

Address: 32/1-A&B, Pune Nagar Road, Pune-411014

Tel No: 2041015555

Email: [pune.regency@hyatt.com](mailto:pune.regency@hyatt.com)

URL: [pune.regency@hyatt.com](http://pune.regency@hyatt.com)

Principal Architect: Bilkey Linas Design

Built-Up Area: Facade, Hardscape and Water Features, Sculptures

Start Date: Jul 2008

Completion Date: Oct 2009

Photographer: Ms. Ruchika Grover

Hyatt Regency Pune images / information received 110913



AdChoices

[House Roof](#) [Architects](#) [Architect](#) [Architecte](#)

India Architecture

Indian Architecture Walking Tours

Hotel Buildings

Indian Architects

Indian Buildings

Vivanta by Taj, Bangalore  
Warner Wong Design



photo from the hotel

## Tweets

Follow @e\_architect



e-architect

@e\_architect

22m

European Prize for Architecture winner on e-architect

[bit.ly/PRepsV](http://bit.ly/PRepsV)

Marco Casagrande [#architecture](#) [#europe](#)

[pic.twitter.com/d43C1pwlHs](http://pic.twitter.com/d43C1pwlHs)

Show Photo



e-architect

@e\_architect

1h

Hyatt Regency Pune, India on e-architect

[bit.ly/17ppEBC](http://bit.ly/17ppEBC)

elegant hardscape by Odyssey [#india](#)

[#architecture](#) [pic.twitter.com/0zdhpCwQUH](http://pic.twitter.com/0zdhpCwQUH)

Show Photo

Tweet to @e\_architect