

Architecture

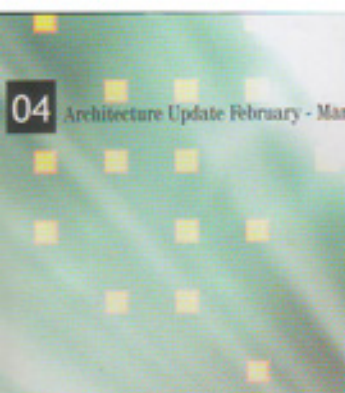
7th Anniversary

PAGE 1

ARCHITECTURE | INTERIORS | LANDSCAPE

AU
UPDATE

SPACE CRAFT



Homes, Inside Houses

This Anniversary Issue, we start updating our readers on Interiors & its Spaces. After all, innovative products are a means of generating a sustainable profile and design is an innovation factor that creates added value. 2014 interior design trends are bold, yet simple and aesthetically appealing. The current 2014 trends in Furniture, Outdoor, Bathroom and Wellness, Office and Workplace, Building Fixtures, Walls/Floors/Ceilings, Lighting, Textiles and Kitchen/Household takes a modern look on classic strokes, with bold trends, mix fashions and etc. Less is more is also the Mantra for 2014 leaving behind purposeless accessories. Sculptural art work and beads play a dominant role in designing the interiors.

scroll the pages to know more...

INDEX OF ADVERTISEMENTS

	Page nos.
ACC Limited	03
Asian Business and Conferences Ltd 1	25
Fascinations	19
Furniture World	09
Futura Kitchen Sinks India Pvt Ltd	33
Gujarat Guardian Limited	BC
Graand Prix Elevators India Pvt Ltd	13
Graand Prix Elevators India Pvt Ltd 1	49
Jupiter Aqua Lines Ltd	07
Leader Valves Ltd	11
Nicomac Doors Pvt. Ltd	17
Olive Exports Pvt Ltd	37
Paradise Ceramics India Pvt Ltd	23
Philips India	IBC
Roca Bathroom Products Pvt Ltd	IBC
Sleek Boards India Ltd	29
Somany Ceramics	47
Space Creative Designer	15
Steller Quartz Pvt Ltd	39
Triveni Glass Ltd	05



Ruchika Grover is the Director of Odyssey: Stone Architecture & Design, a Stone Value Addition Unit that strives to lead the way in using natural stone as an architectural and a design element. The firm was found in 2006 to undertake Turnkey Projects of Stone Supply and Fixing, offering services such as Exterior and Interior Stone Flooring Installation, Exterior Dry Cladding and Stone Restoration Services, made-to-order products. Ruchika's work over the last six years has enabled her to understand the vast varieties of stone available. She sets about chiseling, hammering and carving—all with a view to create something new and is currently partnering with Architects, Designers, Contractors and Decorators for large Residential, Hospitality and Commercial projects across the world. Ruchika has developed several collections of Wall Surfaces and Jaalis (Breathing Surfaces). The collections are designed keeping in mind natural stone, its versatility and technique, and elements of design resulting in a dynamic and pioneering approach to the utility of stone. Some of the other collections include Wall/Floor Surfaces and Sculptures using light, water and stone together to create art for internal and external spaces, Gemstone Chandeliers etc. Odyssey is known for hardscape projects for Pune's Hyatt Regency, The Ritz Carlton, Bangalore, The Indira Gandhi International Airport, Terminal 3, New Delhi, Kempinski, Shahdra and a 32-foot-high pylon for a bio-diversity park in Hyderabad etc.

Odyssey: Stone Architecture & Design
A - 106 Sector - 5
NOIDA, India
tel: + 120 4335911/12
web: www.odysseystone.com



BREATHING SURFACES

Inspired by Parametric Design, these panels add a completely new dimension, literally, to the "Jaali" work. With an option to overlay/inlay them with Shellstone, these are ideal for any interior/exterior panelling.

- The installations exhibited are
- Cerco in Black Granite with Black-Mother-of-Pearl inserts
 - Dairaa in Grey Quartzite with Yellow Aventurine Inserts
 - Xylem in Black Granite



Stunning designs

*Ruchika Grover, Director,
Odyssey: Stone Architecture & Design*



FACETED TABLE

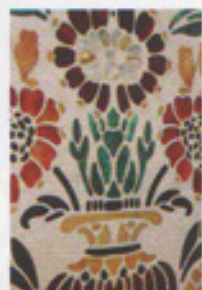
Edgy, angular, **Faceted Table** carved from blocks of Greek White marble is ideal for a bar, conference or a reception table.



DAR-AS-SALAM (ADOBE OF PEACE)

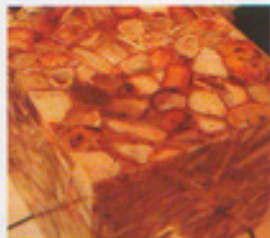
Inspired by Islamic art, this overlapping geometric pattern, plays with two dimensional and three dimensional engraving. The elaborate Malachite, Brass, Mother-of-Pearl and Lapis Lazuli adds oomph to the serenity of the wall panel.





PARAKEET

Red Jasper, Malachite, Yellow Aventurine, Belgium Black, Mother of Pearl and Carnelian are inlaid in hand chiseled white marble to illustrate foliage and flowers flanked by Parakeets on either side.



GEM CUBOIDS

The Gem Cuboids add spunk, fun and glamour to any indoor or outdoor seating. Available in Amethyst, Rose Quartz, Red Onyx, Agates and Aventurines, they light up like little jewels when backlit.



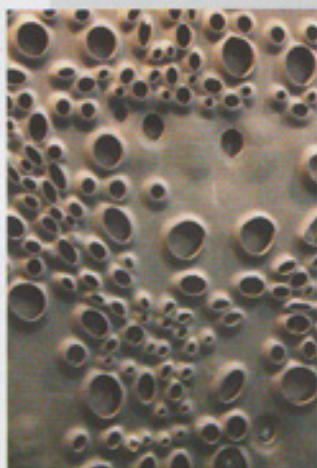
PLEATS & CREASES

The tabletops give you a preview to our next collection - Pleats and Creases. Inspired by the wonderfully fun art of origami, this collection allows you to experiment with pleats and creases on water cascades, surfaces, table tops, floors and also as sculptural installations.



KINETIC MURAL

Kinetic has roots in the Greek word kin-tikos (Kinesis) meaning motion. With the Kinetic Collection, Odyssey explores 'energy in motion', adding life to natural stone. Each pattern in the collection appears to be moving and gives the surface a 3-dimensional effect. The play of shadow on stone, coupled with an appearance of movement, adds life to natural stone and makes for collection of one-of-a-kind surfaces. Odyssey explores movement through this mural. Each panel appears to be in motion and adds life to the Natural Stone. The panels can be adjusted in proportion to create a stunning façade, mural or a feature wall.



POSY OF PLUMES

This cluster of dimensional flowers can be interpreted as a sculptural installation, wall mural, water-body adornment or simply a conversation piece.

