

Comfort on a budget
Rooms starting @1499/-*

[Book Now!](#)

[BROWSE PROJECTS](#)

[SEARCH PROJECTS](#)

[UPLOAD PROJECTS](#)

[ARTICLES](#)

[DIRECTORIES](#)

[MAPS](#)

Hyatt Regency, Pune

[Like](#)

0

[Tweet](#)

0

Views : [68]

Comments : [



Odyssey Stone

Noida, Uttar Pradesh

[view profile](#)

Location Map of Project

Warning:

file_get_contents(http://maps.google.com/maps?&q=32%2F1-A%2BPune%2C%20%2CIndia&9RPBrQK6w7OKIoQ)
[function.file-get-contents]: failed to open stream: HTTP request failed! HTTP/1.0 403 Forbidden in

[Adjust Project Location](#)

Projects from Same Designer

Projects from Same Category

Projects from Same Location

Projects of Similar Form

Projects of Similar Materials







Airwil Intellicity Park
www.airwil-intellicity.net
 Greater Noida West Call 9
 Best Price Rs. 3,899 / Sq.

About this Project

Odyssey was awarded the Hardscape contract for The HYATT REGENCY in Pune. The principal architect Design and Landscape architect Joel Burega envisioned a tropical feel for the external area of the Hotel. Involved in the stonework for various elements of the building including its landscape. **FAÇADE:** 5000 : Flower Limestone in an antique finish has been dry clad on the twin towers of the Hyatt Regency; one : apartments and retail, while the second is a five star business hotel. **HARDSCAPE AND WATER FEATURE:** driveway is cobbled in Black Granite & Yellow Jaisalmer hand-cut cobbles in 200 x 100 x 100 mm. A raised body is clad with Tropical Green Granite, which is grooved and chipped to provide a white water effect. Flanking the reflective water body have a solid stone spherical base and brass tops. Tropical Green Granite sculptures of 1500 mm height and with a high gloss finish are placed in the alfresco dining area. **ARTWORK:** Black Granite Arches: a single block of 300 mm thick stone. These arches are propelled on stainless steel rods and installed on a stone slab. Lotus Pad Cut-Work Lattice is water-jet cut in 50 mm thick Black Granite and is flanked by 2 from spherical stones of 150 mm diameter and installed on brass stems on either side of the lattice. Water arches which were carved out of a single block of 300 mm thick stone and these arches were placed on prop steel rods and installed on 100 mm thick stone slab. Floating Lanterns on the reflective water body have a spherical base and brass tops. Tropical Green Granite Sculptures of 1500 mm height and with a high gloss finish in the alfresco dining area. Odyssey handed over the project within 14 months from the date it was awarded. The scope of work included façade, Hardscape, water feature and artwork. No, as such we didn't face any of the project construction phase. Maintaining the perfect level, and consistent water flow throughout, on all sides of the water body was a challenge. The intent was to have very little movement of water on the surface of the water body, an even cascade on the rippled surface of the edges of the water-body.

Project Info (Category / Project Cost / Period of Project)

Category : Hospitality (Hotels, restaurants, clubs etc.)

Cost : 0 INR

Area : Information not provided. Provide it now

Client / Owner : Mr. R K Jatia, Ascent Hotels Pvt. Ltd

Project status : Completed

Period of Project : —

Project / Company Website : Information not provided. Provide it now

Submission Type : Professional Submission

Project Structure (Structure Type / Materials Used)

Structure Type : Other

Materials Used : Concrete, Natural Stone

Climate (Climate / Local Topography)

Climate : tropical monsoons, scorching summers

Project Design (Spatial configuration / Form of project / Concept)

Analogy / metaphor / Concept : The principal architects Bilkey Linas Design and Landscape architect envisioned a tropical feel for the external area of the Hotel. Odyssey the stonework for various elements of the building including its lan

Form of project : Rectangular

Spatial configuration : Mixed

Project Team and Consultants (Project Team Consultants / Project Team Members)

Team Members : **Role:** Principal Architect
Name: Bilkey Linas Design
Role: Design Team / Team Members
Name: Ruchika Grover: Odyssey stone Architecture and Design
Role: Photographer
Name: Ruchika Grover

Consultants : **Information not provided. Provide it now**

Awards & Recognition (Awards/Recognition)

Project Files (Drawing / 3D Model / Text file)

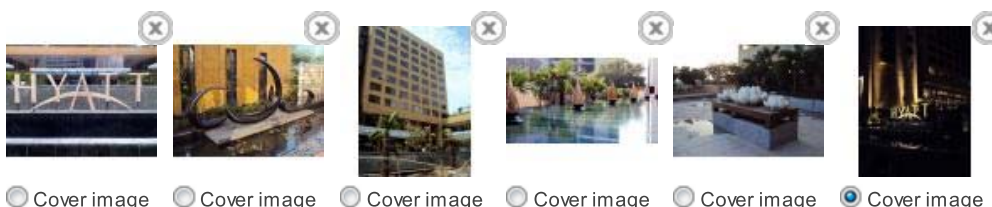
Drawing File 1: **Information not provided. Provide it now**

Drawing File 2: **Information not provided. Provide it now**

3D Model : **Information not provided. Provide it now**

Text File : Hyatt.docx

Project Images



Project Keywords (Keywords)

Keywords : facade, stone designers, hardscape, landscape, sculptures, Hyatt Regency completed, Odyssey Stone, Pune, hilly, The principal architects Bilkey Linas Design and Landscape architect Joel Burega envisioned a tropical feel for the Hotel. Odyssey was involved in the stonework for various elements including its landscape., Other, Rectangular, Concrete, Natural Stone

Project Comments (Comments)



Post Comment

No Comments.